



Farmers farming in derogation contribute over **€900m** in agricultural output each year, in every county in Ireland.

The current review provides an opportunity to reverse decades of declining soil fertility and position Ireland's farming sector for growth in exports and jobs, through the introduction of a Sustainability Development Programme.

This **Sustainability Development Programme** will improve efficiency and reduce the environmental footprint, with particular regard to water, climate, air and biodiversity.

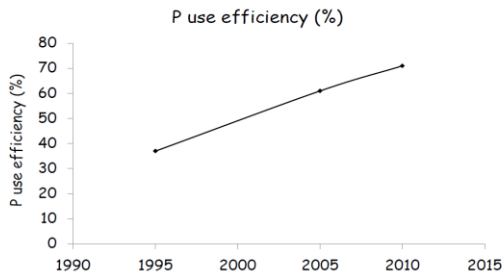
Measures that must be delivered include:

<ul style="list-style-type: none">• Implementation of Teagasc's climate roadmap.
<ul style="list-style-type: none">• Increased funding and removal of VAT for low emissions slurry spreading equipment.
<ul style="list-style-type: none">• Supports for greater use of protected urea, lime, slurry additives and soil aeration.
<ul style="list-style-type: none">• Support for anaerobic digestion and on-farm renewables.
<ul style="list-style-type: none">• Full recognition of the carbon sinks from forests, permanent pastures and hedgerows.
<ul style="list-style-type: none">• Greater use of organic manures on farms.

Necessary measures:

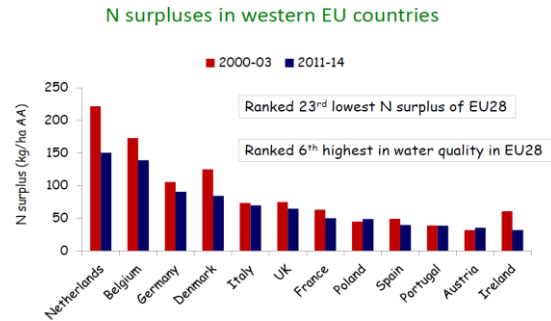
- **Retention of the nitrates derogation, without further onerous obligations.**
- **Rejection of additional measures on lower stocked farms or their classification as "intensive".**

The Department of Agriculture, Food and the Marine is currently completing an early mid-term review of the nitrates derogation.



 The Irish Agriculture and Food Development Authority

Figure 1: Phosphorous use efficiency (the ratio of P inputs to a farm that end up in products sold off the farm) on dairy farms in Ireland.



 The Irish Agriculture and Food Development Authority

Figure 2: Nitrogen surpluses in western EU countries.

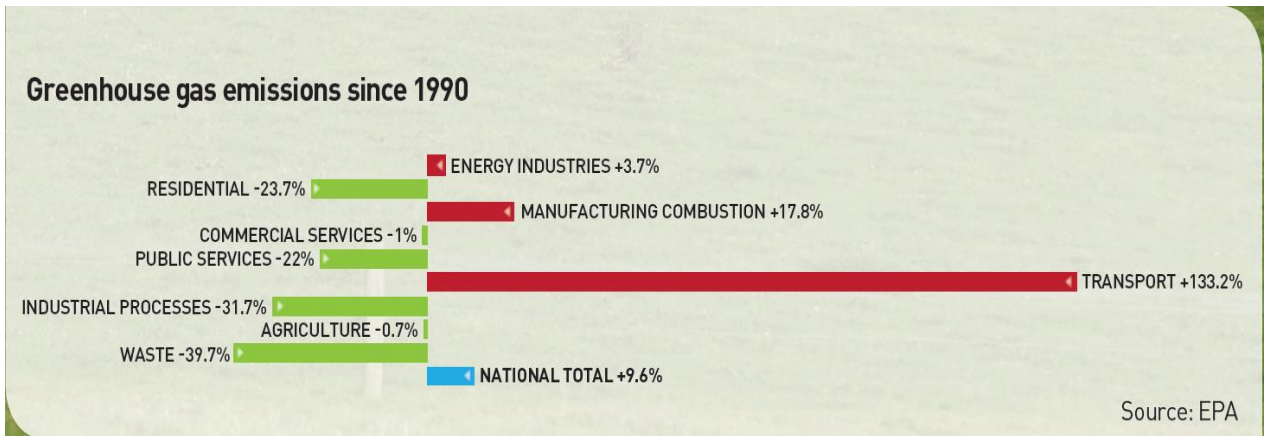


Figure 3: Changes in Ireland's greenhouse gas emissions since 1990.

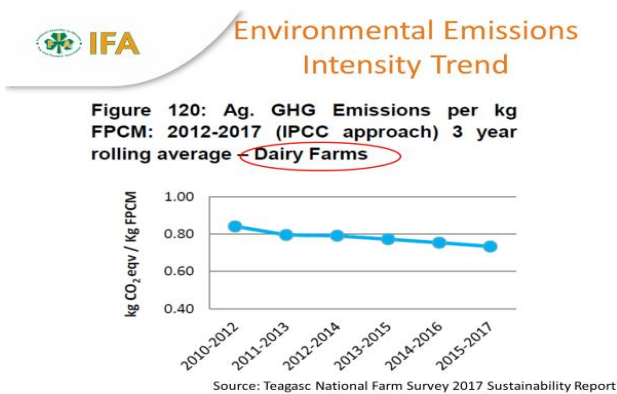


Figure 4: Emissions intensity trend on dairy farms.

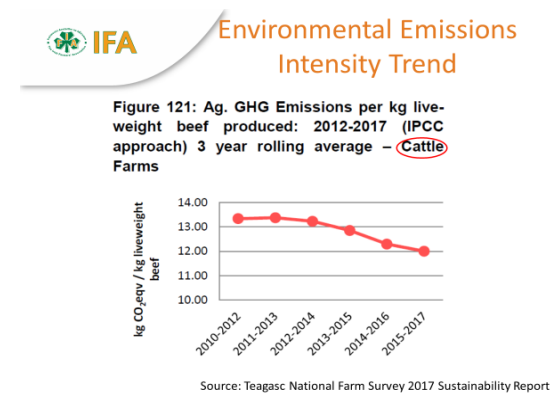


Figure 5: Emissions intensity trend on cattle farms.