

The carbon emissions of Irish aquaculture

IFA Aquaculture

Ronan Cooney

Sustainability & Certification

23/03/2023

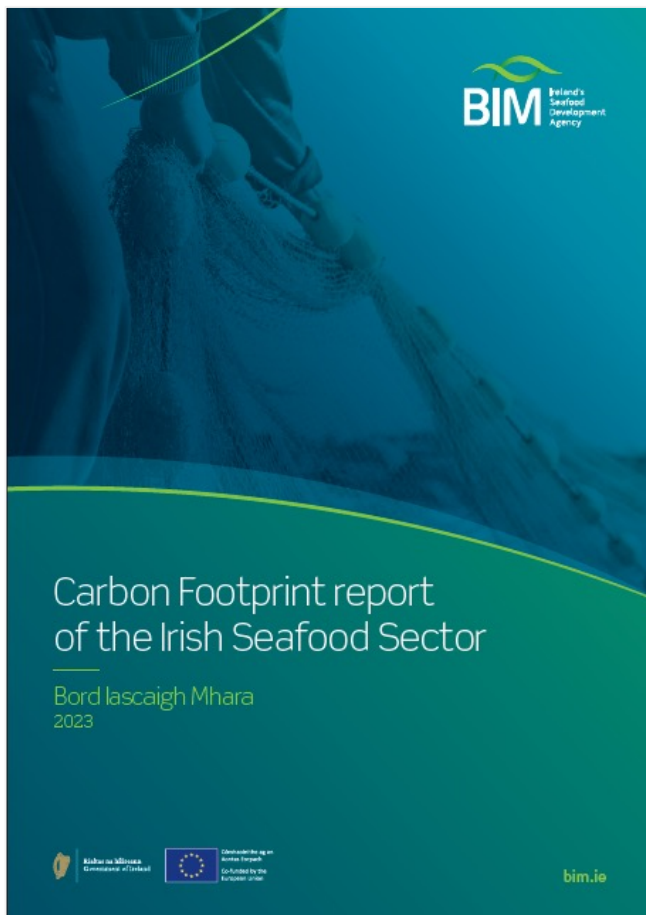


Rialtas na hÉireann
Government of Ireland

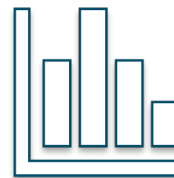


Có-mhaoinithe ag an
Aontas Eorpach

Co-funded by the
European Union



Background



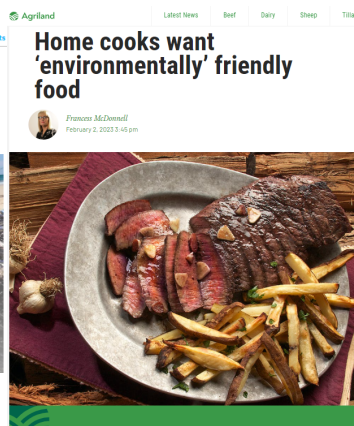
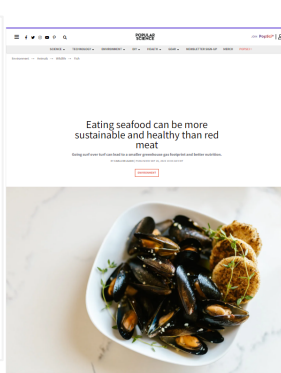
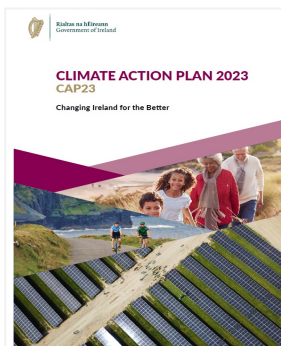
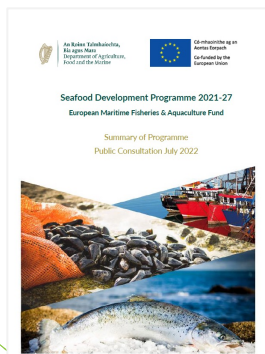
Results



Next steps



Background

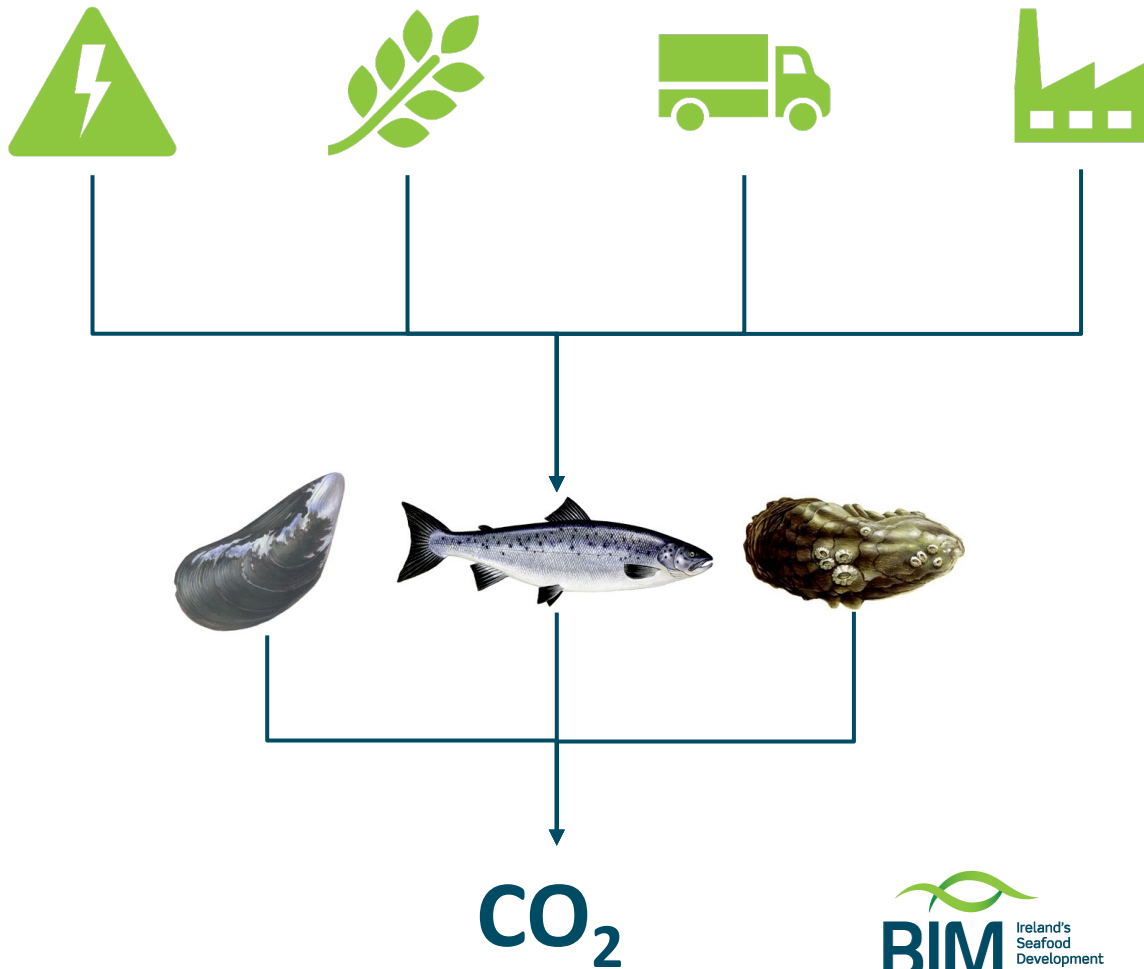


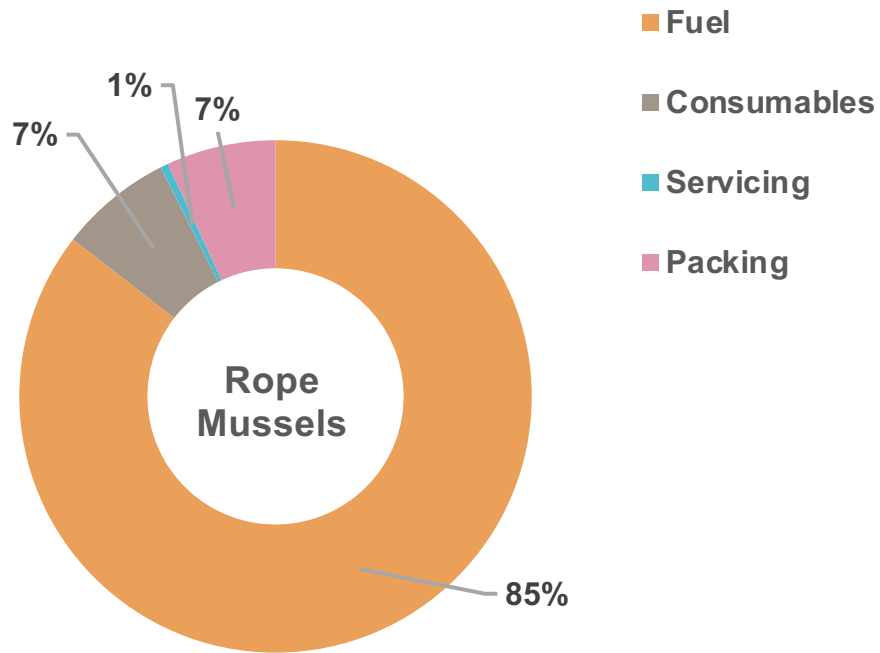


Methods



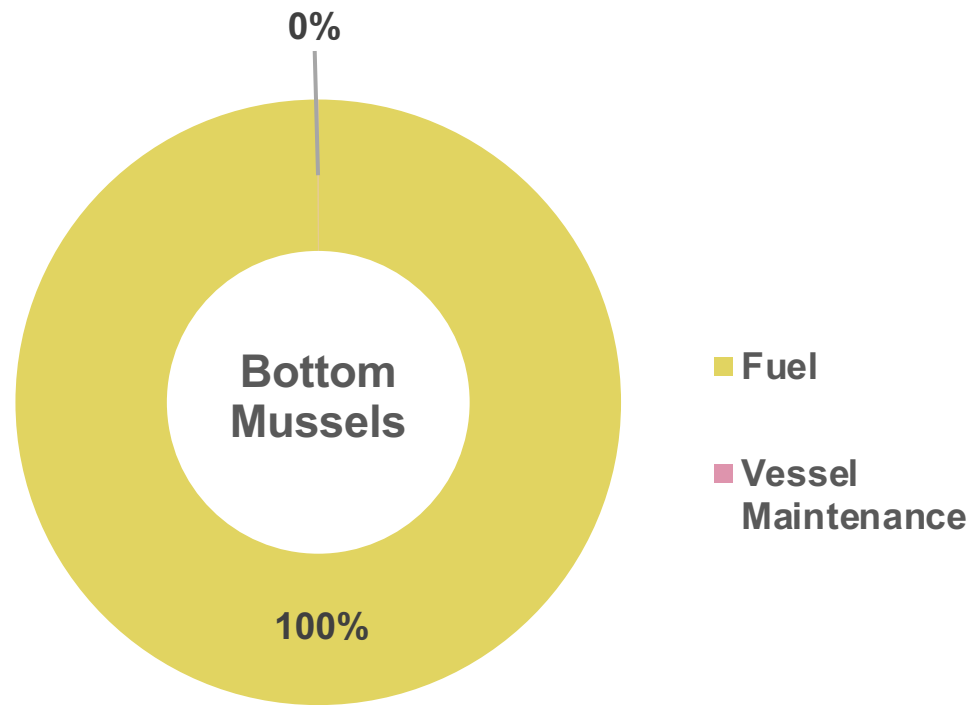
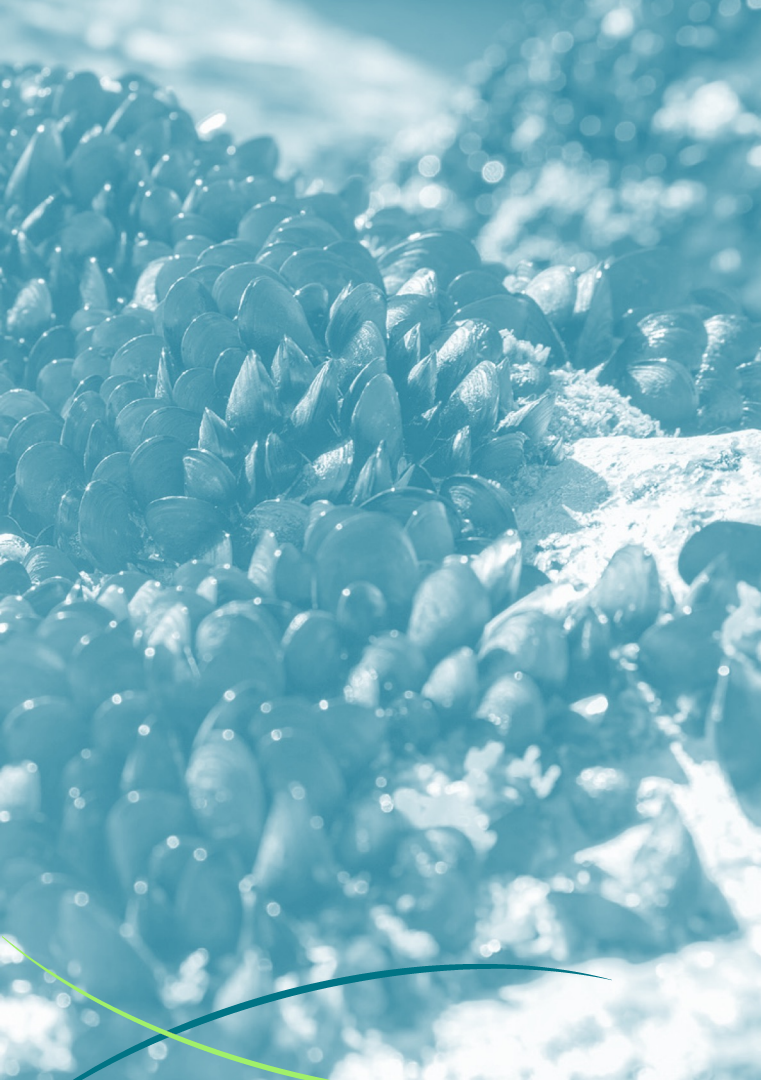
LCA & PAS 2050-2



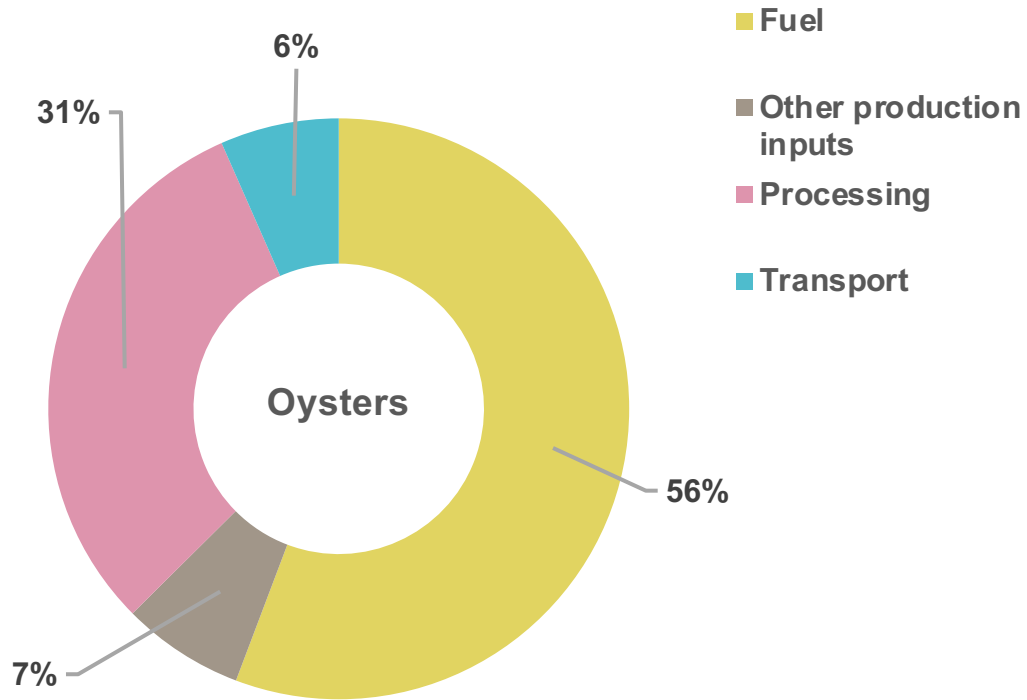


0.107 kg CO₂ eq./kg



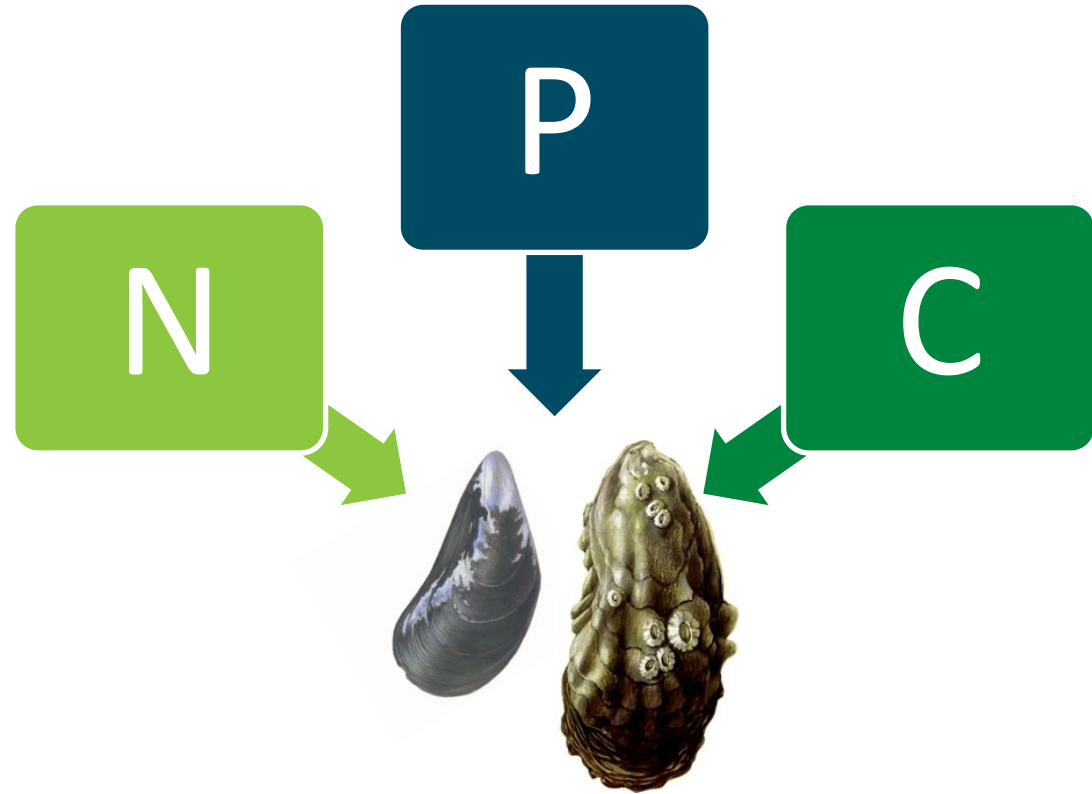


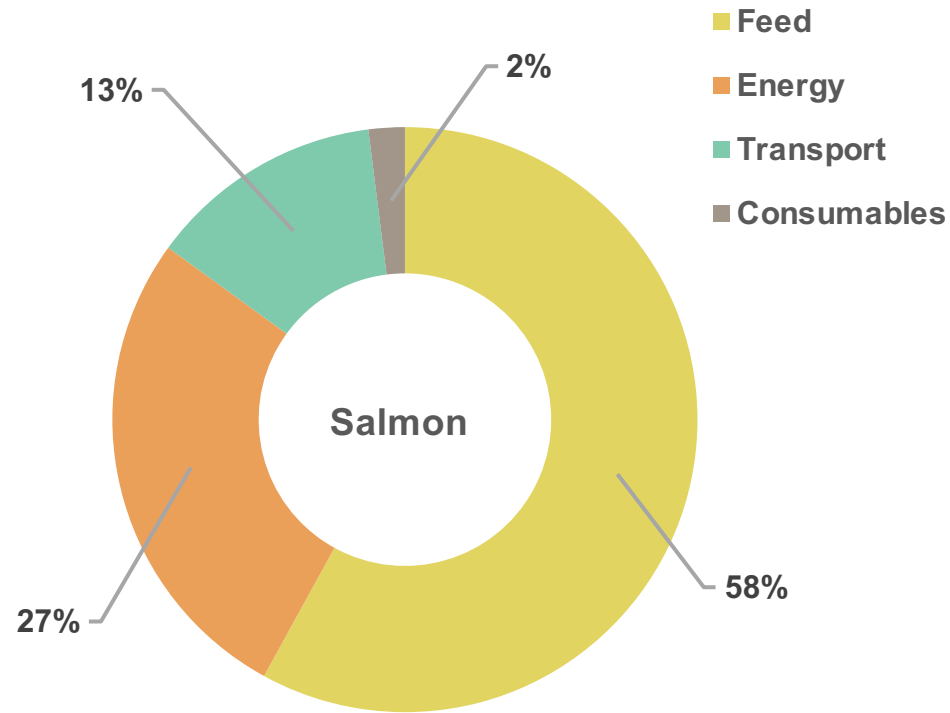
0.823 kg CO₂ eq./kg



0.235 kg CO₂ eq./kg

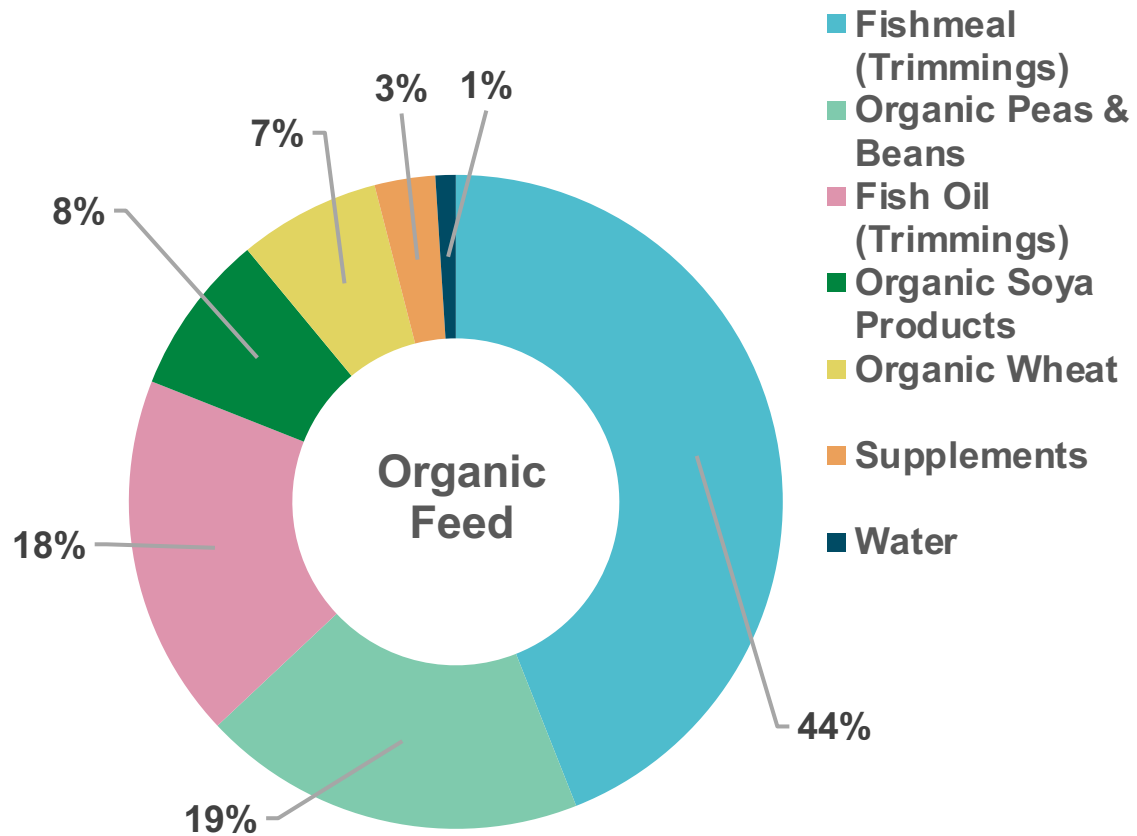






3.88 kg CO₂ eq./kg





Ingredients - Coventional salmon feed (UK)

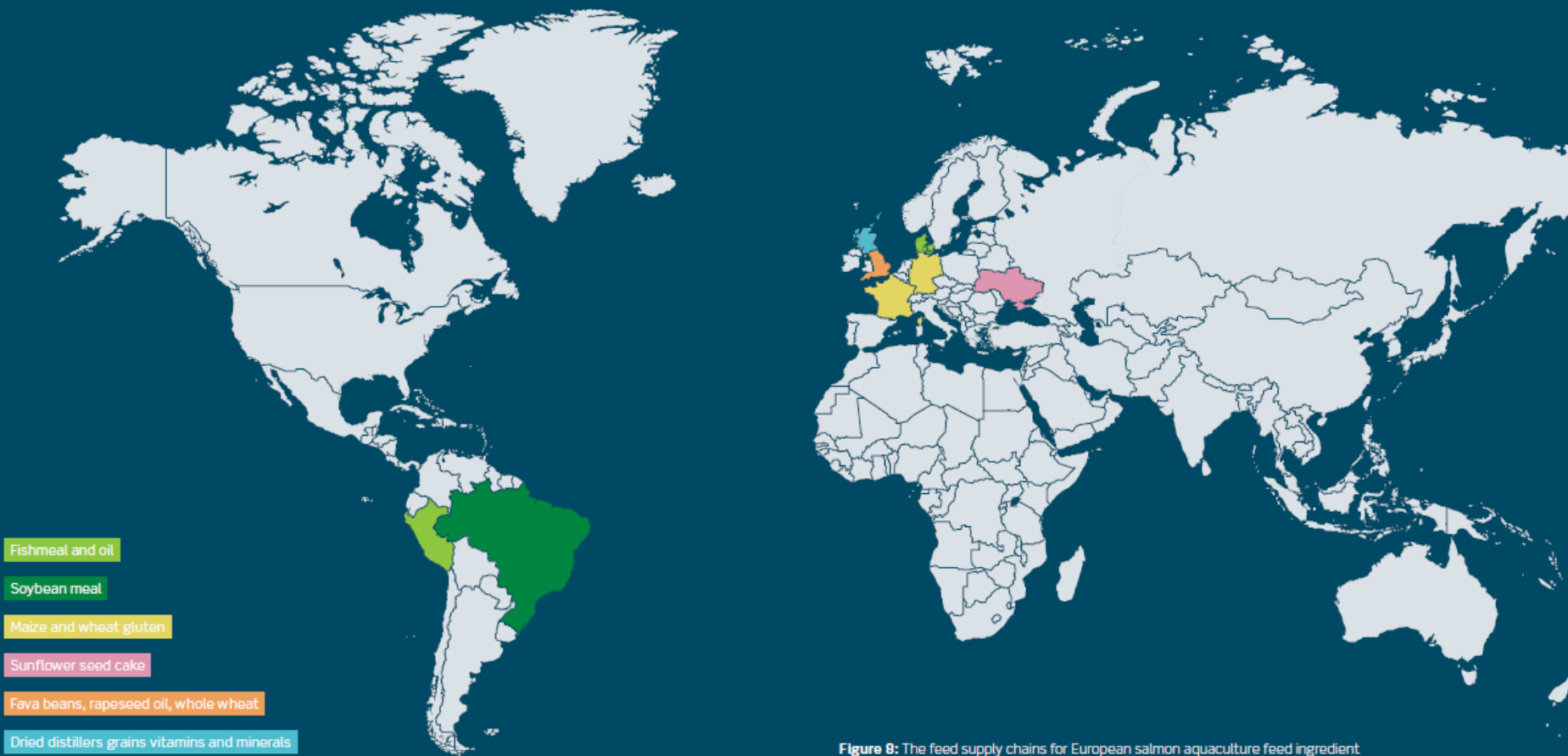


Figure 8: The feed supply chains for European salmon aquaculture feed ingredient. (Source: Newton and Little, 2018).

Ingredients - Coventional salmon feed
(Norway)

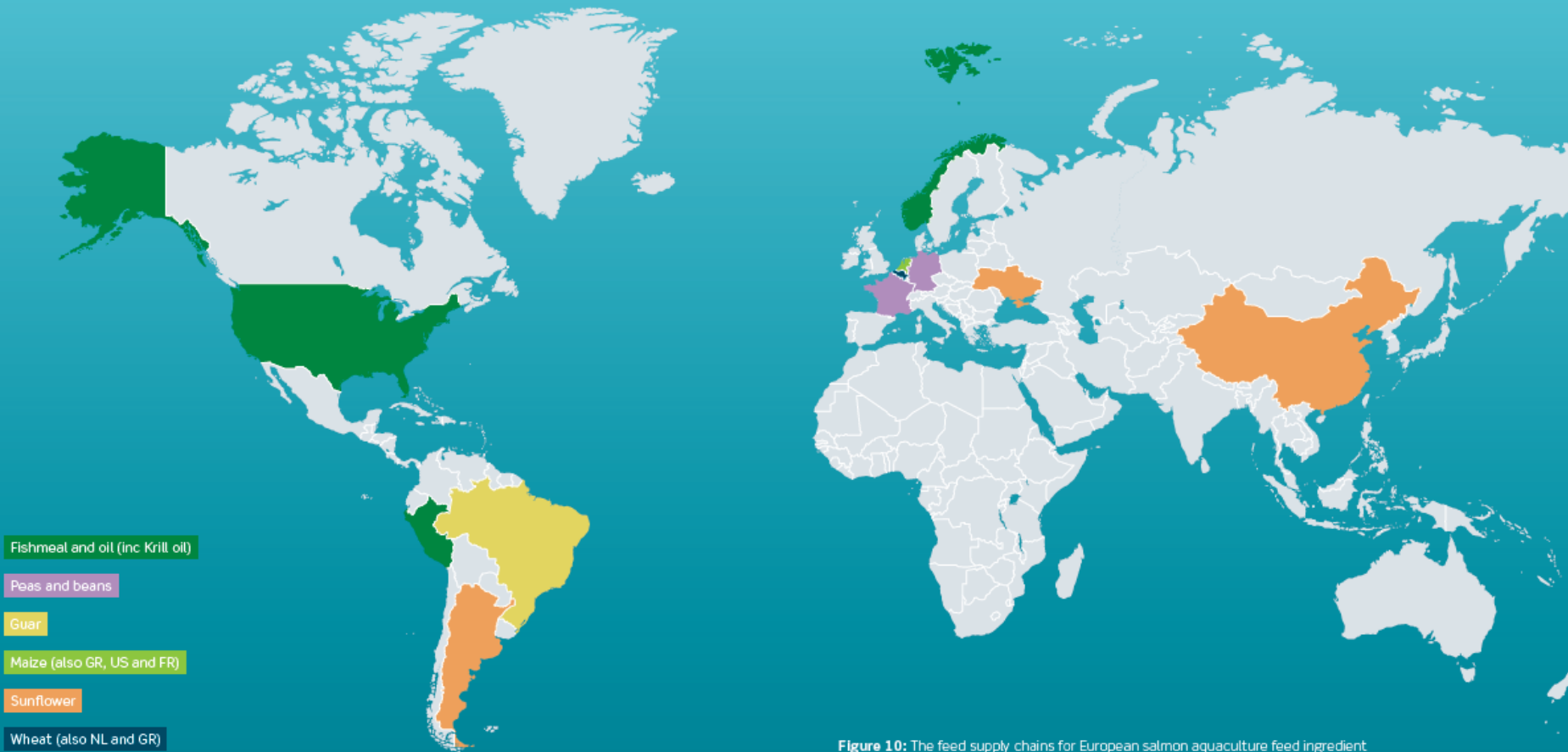
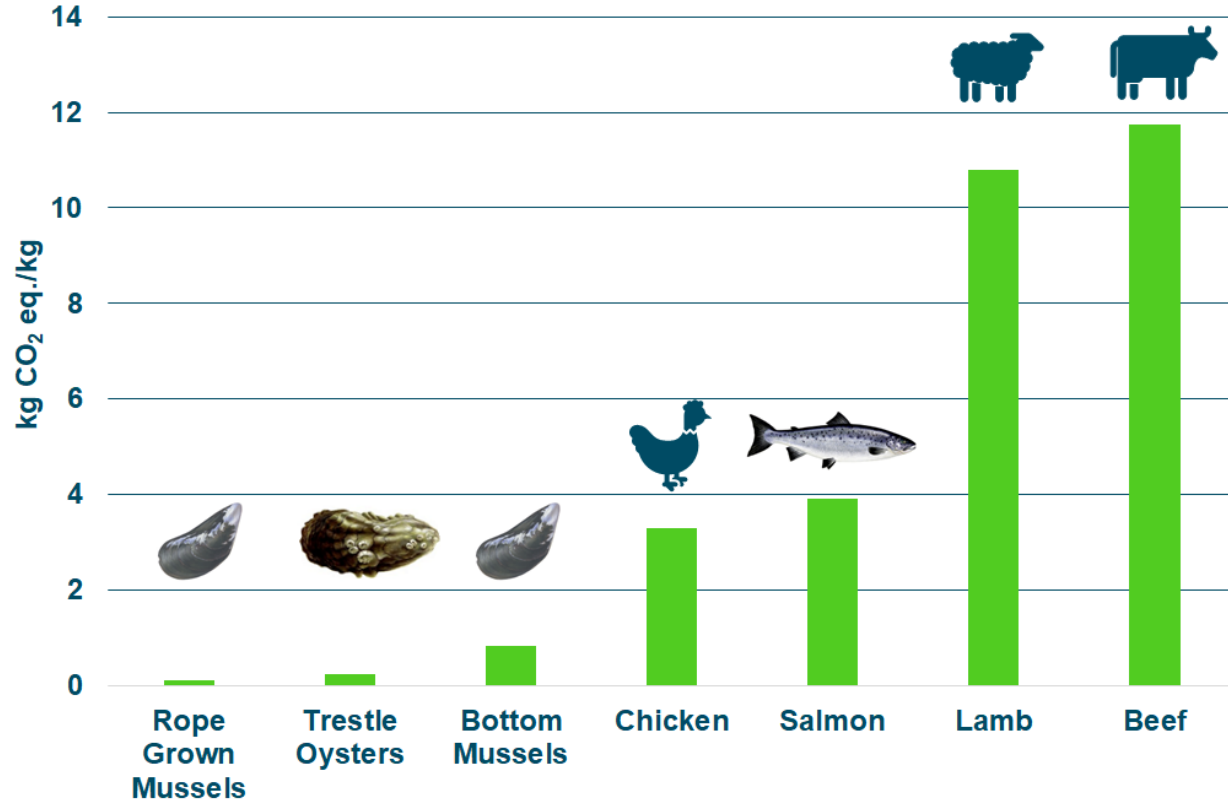


Figure 10: The feed supply chains for European salmon aquaculture feed ingredient
(Source: Winther et al., 2020).

Ingredients - **Organic Salmon Feed Ingredients in Ireland**
(100% sourced within Europe)

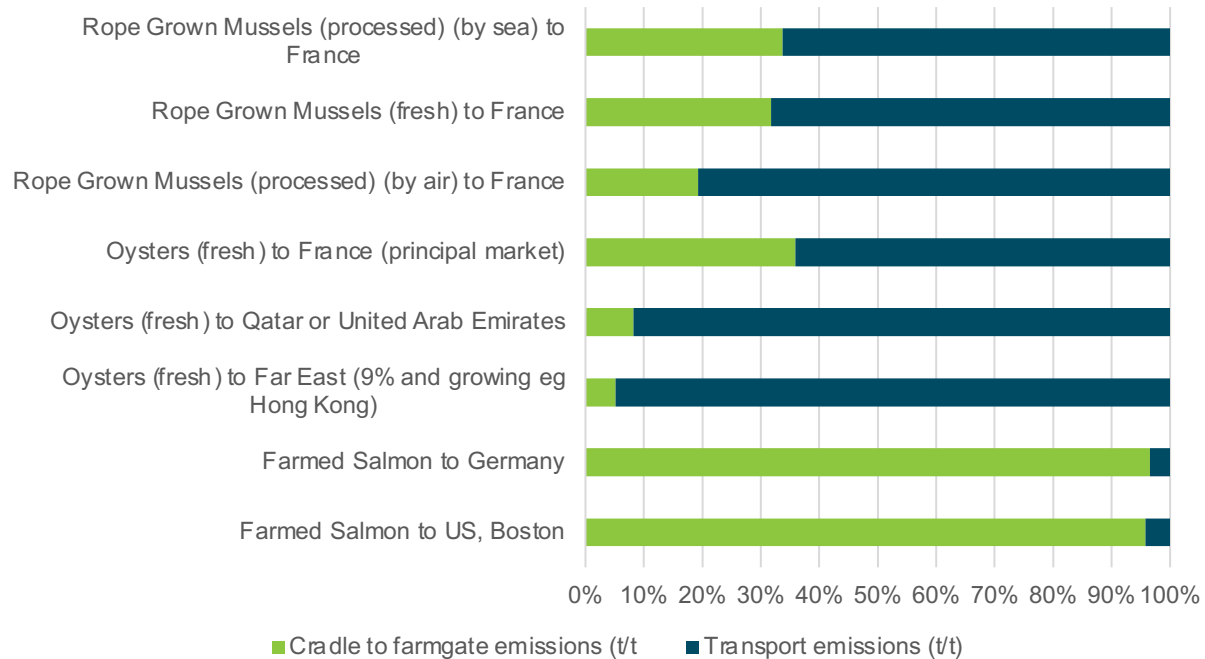


Figure 9: The feed supply chains for European salmon aquaculture feed ingredient.



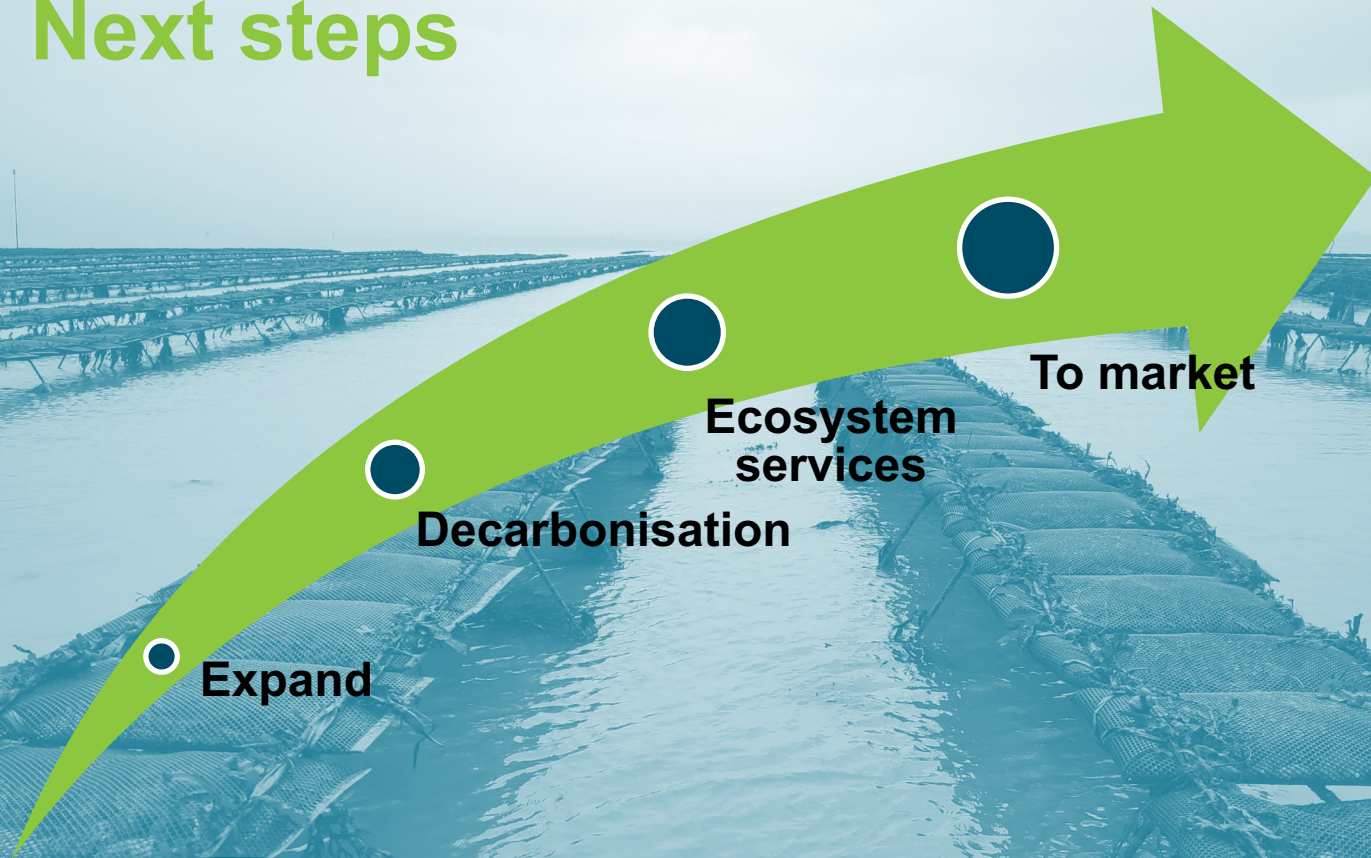
16.5% of
total
seafood
emissions

0.23% of
national
emissions





Next steps



Thank you for your time

Ronan Cooney
Sustainability Officer
BIM

T +353 1 2144121

M +353 87 120 1899

E ronan.cooney@bim.ie

